

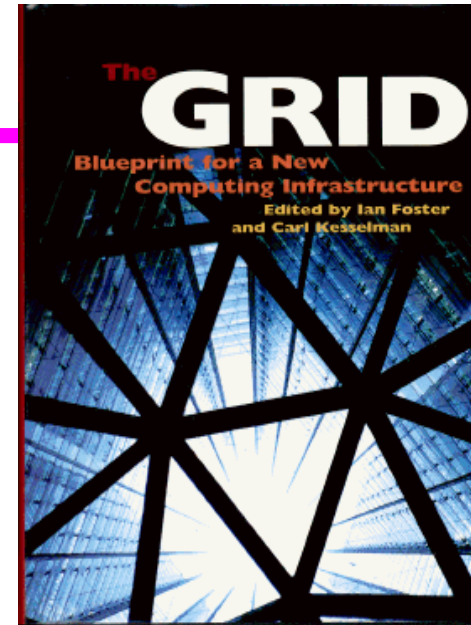
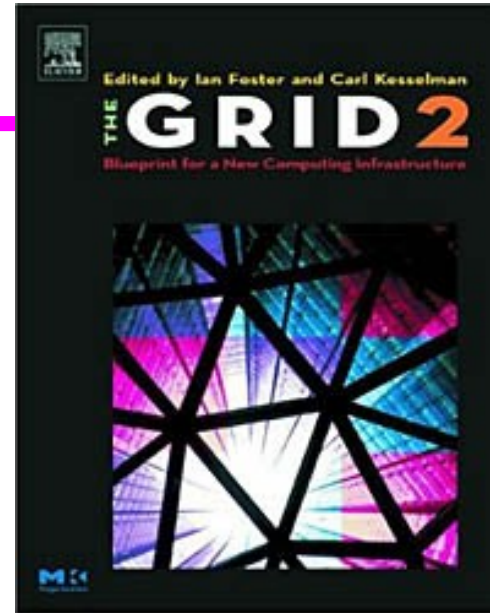
Grid-enabled Social Science

Yuwei Lin

ESRC National Centre for e-Social Science
University of Manchester
<http://www.ncess.ac.uk>

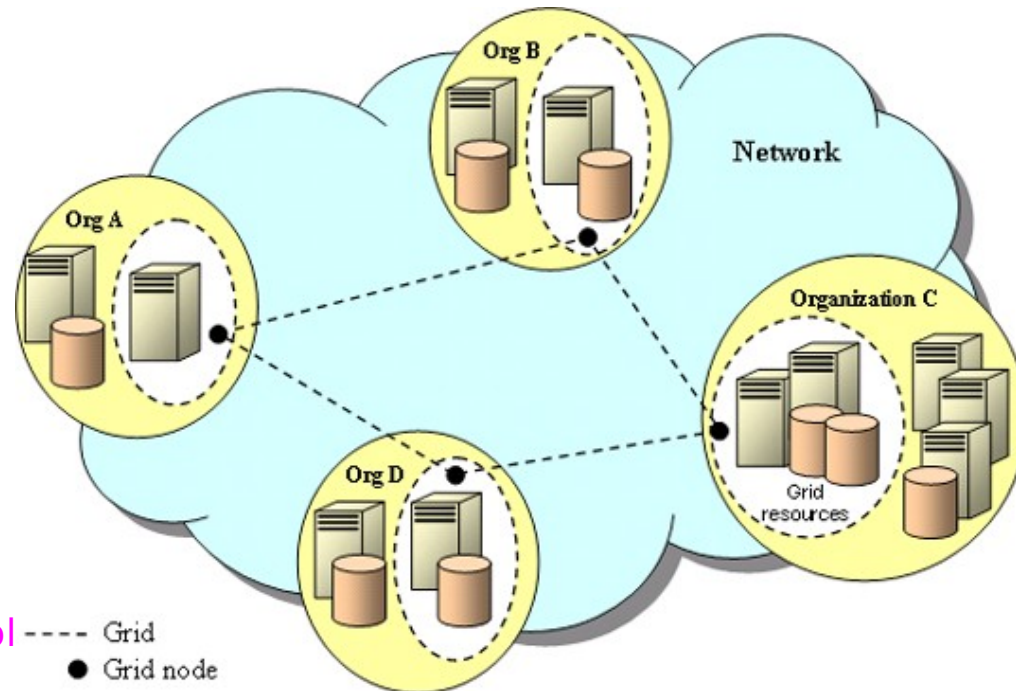
What is Grid?

- Computational Grid
- Data Grid
- Collaboration Grid
- Sensor Grid
- In short, grid is utilisation of widely distributed computing resources, storage facilities and networks owned by different organisations but used by individuals who are not necessarily a member of that organisation (Foster & Kesselman, 1999)



The collaborative nature of Grid

- Grid Resource Allocation is complex:
 - Resources belong to different domains
 - Resources are subject to different policies
 - Resources are geographically distributed
- Sharing of resources among institutions



Mixed Methods (1)

- Digital Records Node (Nottingham)
- Digital Replay System: combining and replaying digital records side-by-side
- Video annotation



Representing multi-modality of data

Mixed Methods (2)

- Head Talk Small Grant Project (Nottingham)
- dealing with multi-modal corpus
- linguistic coding of verbal and non-verbal backchannels

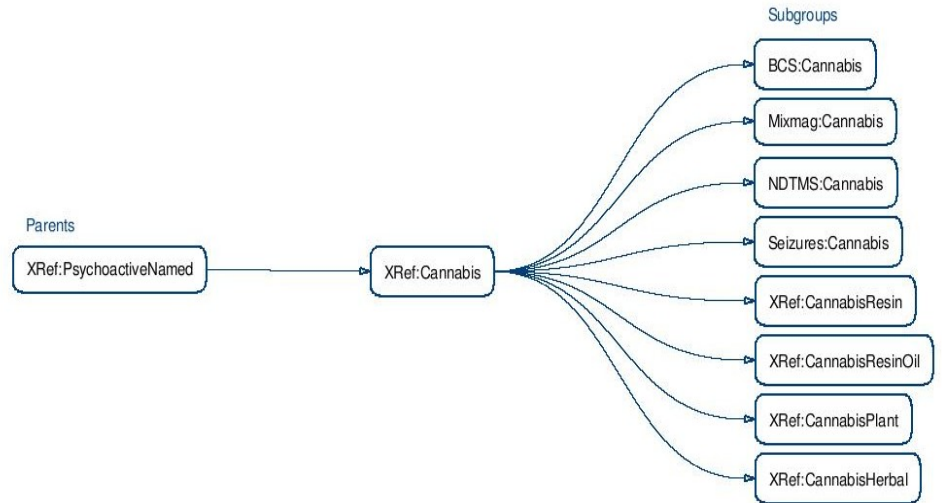
The screenshot displays the Replaytool software interface. At the top, there is a grid of video thumbnails from a meeting. The main window features a 'Replaytool' title bar with 'File Equip Tools Help' menus. A 'QT viewer' window shows a video of two people. To the right, an 'Annotations' window lists time-coded entries such as '14:09:52.504 <F> HEADNOD'. Below this is a 'File selection' table:

File	Mime type	Frozen	Start time
headnodi.mpg	video/mpeg	No	05-Oct-2005 14:09:46
headtalk.txt	text/plain	No	05-Oct-2005 14:09:46

At the bottom, a 'headtalk.txt' window shows a transcript with linguistic annotations like '<M>' and '<F>' overlaid on the text. The 'Play controls' window at the very bottom includes a time slider and buttons for 'Restart', 'Previous', 'Play/Pause', and 'Next'.

Data Discovery (1)

- The Data Chronicles (Manchester): A Repository for Drug Survey Metadata



Creation of Multiple Ontologies

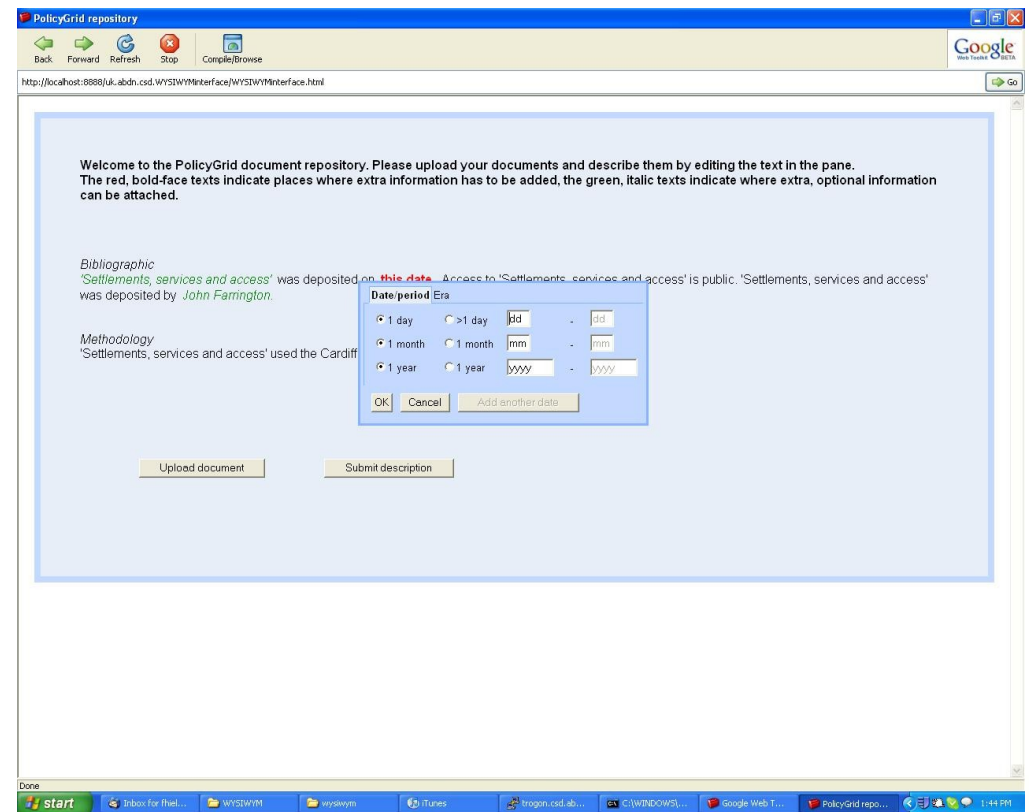


12 September 2007
NCRM Summer School, S

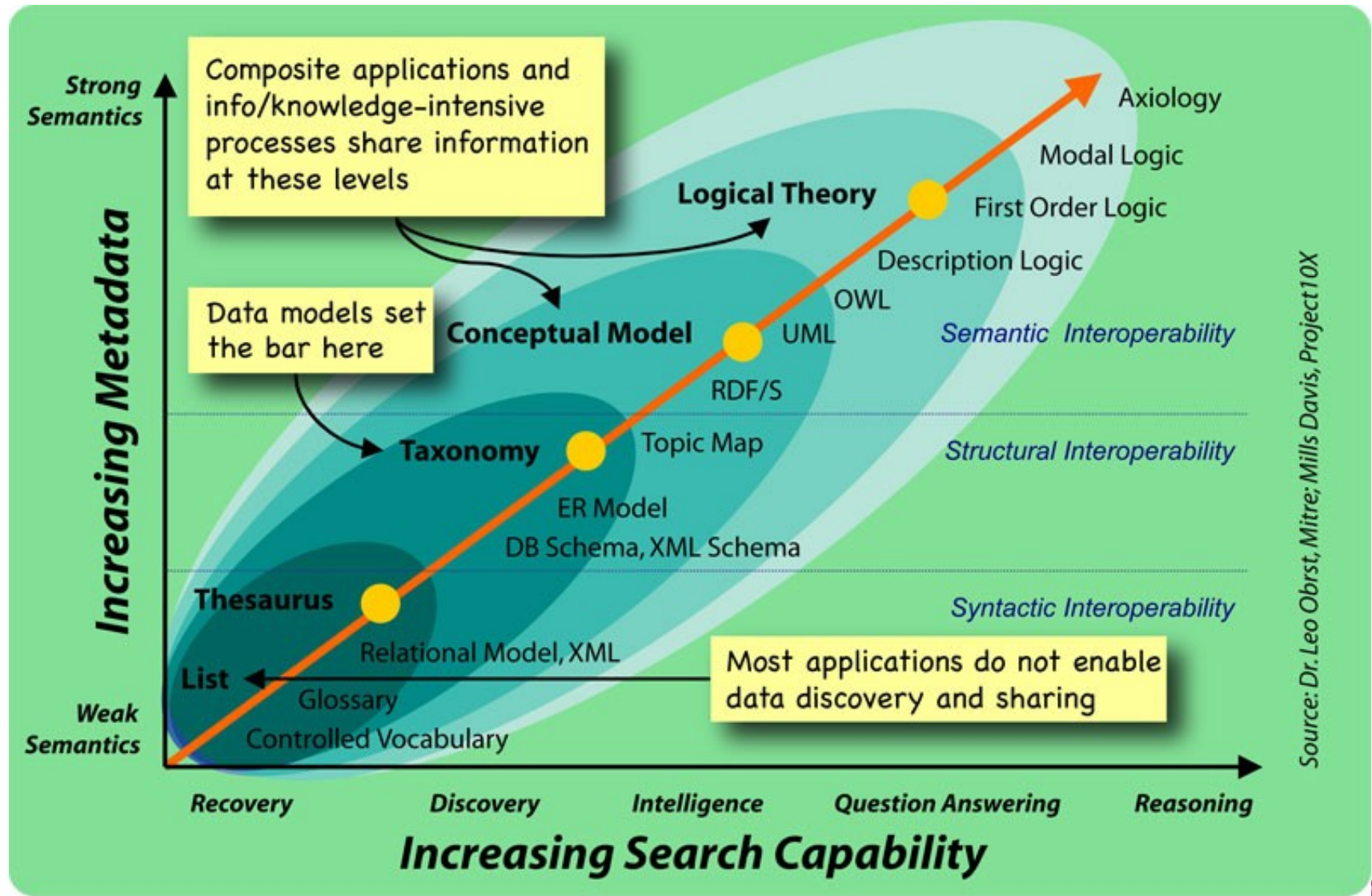
Data Discovery (2)

- PolicyGrid Node (Aberdeen)
- Semantic Grid Tools for facilitating evidence-based rural, social, and land-use policy-making through integrated analysis of mixed data types

- Ontologies and data integration



Semantic Data Discovery



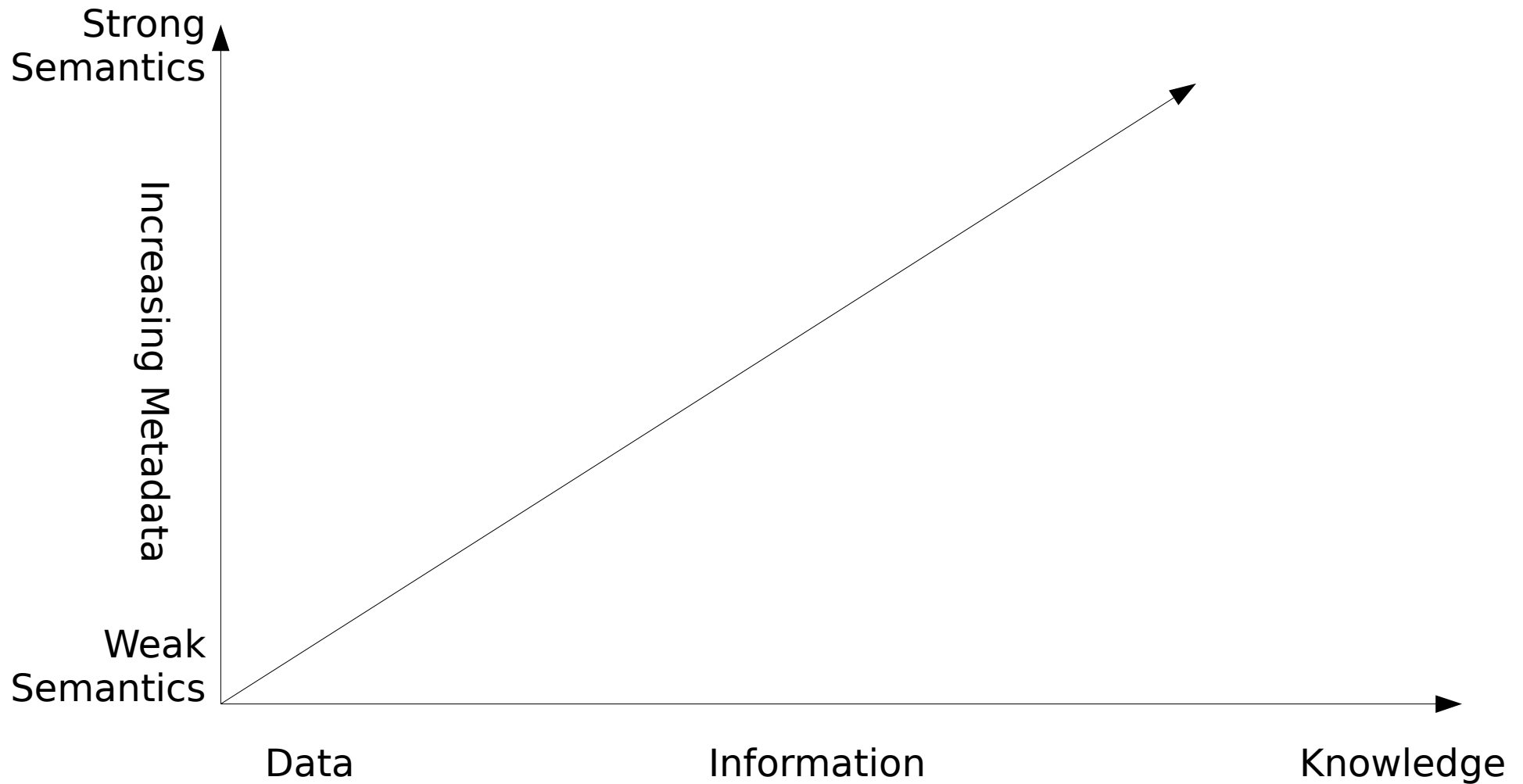
Source: Dr. Leo Obrst, Mitre; Mills Davis, Project10X

© 2005, MILLS•DAVIS. All rights reserved.

12 September 2007
NCRM Summer School, Southampton



Semantic Data Discovery



12 September 2007
NCRM Summer School, Southampton

Modelling and Simulation (1)

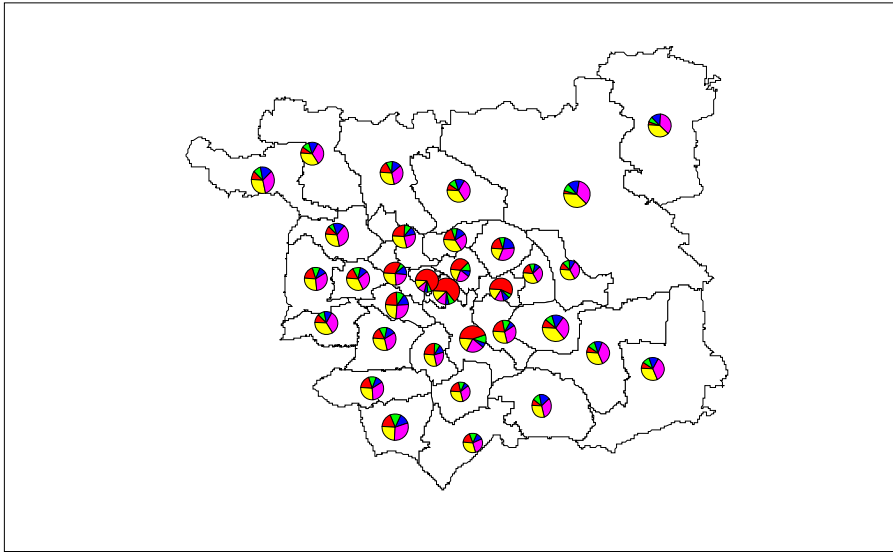
- Modelling and Simulation for e-Social Science (MoSeS) (Leeds)
- represent and forecast the UK population at spatial level
- massive data resources and computing power
- To investigate **scenarios** which relate demographics to service provision
 - with particular emphasis on policy applications within the health, transport and fiscal policy sectors

12 September 2007

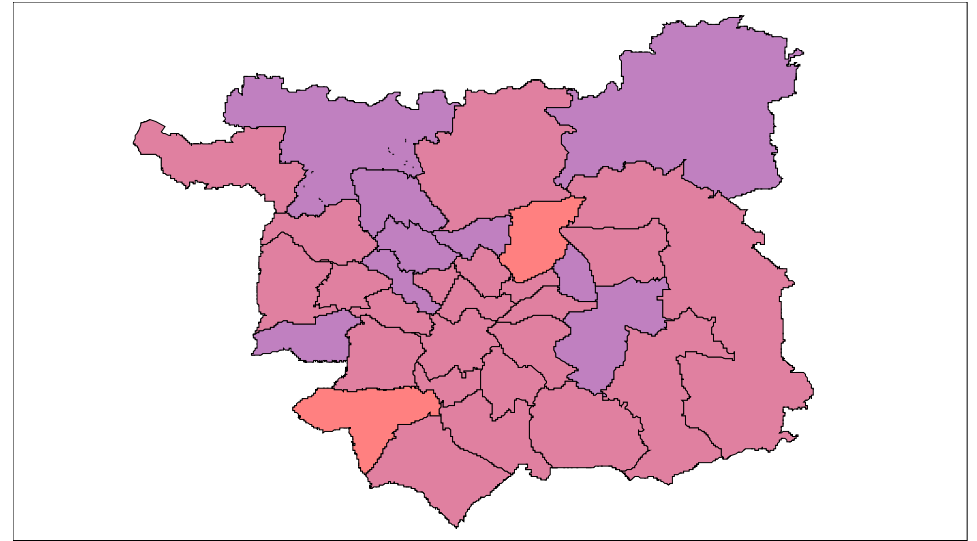
NCRM Summer School, Southampton



Modelling and Simulation (2)



Diabetes 2005

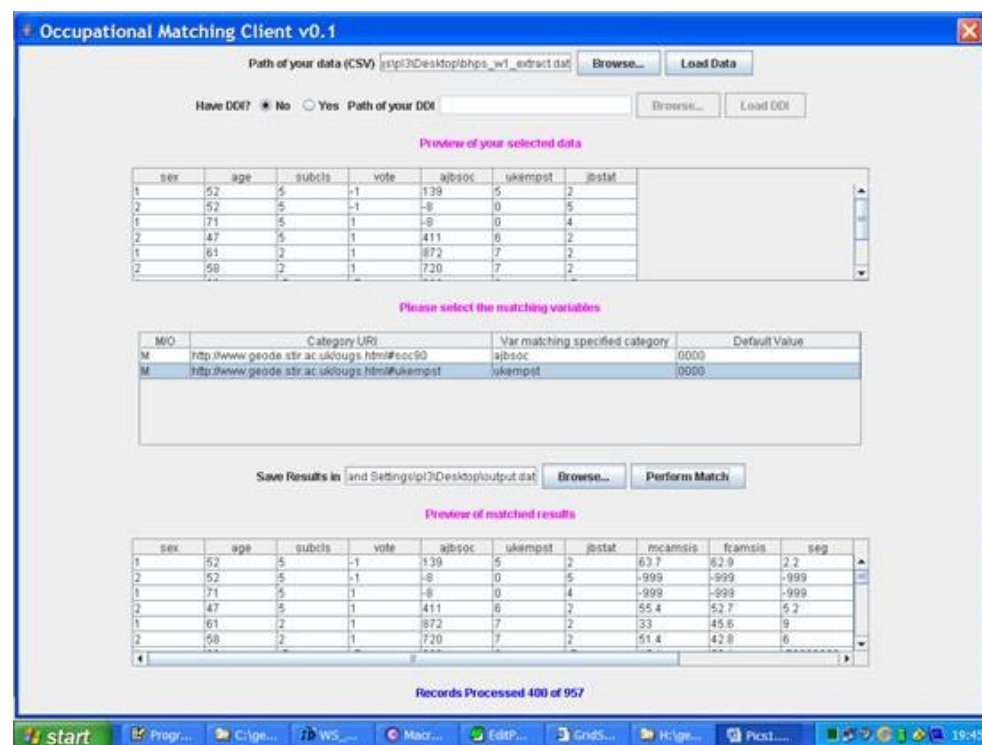


Diabetes 2030

- Data-driven & evidence-based
- Challenges: Restricted access to patient data and privacy issues

Data linkage

- Grid Enabled Occupational Data Environment (GEODE) (Uni of Stirling)
- A Grid enabled internet portal to facilitate the processing of occupational data from social survey and related outputs

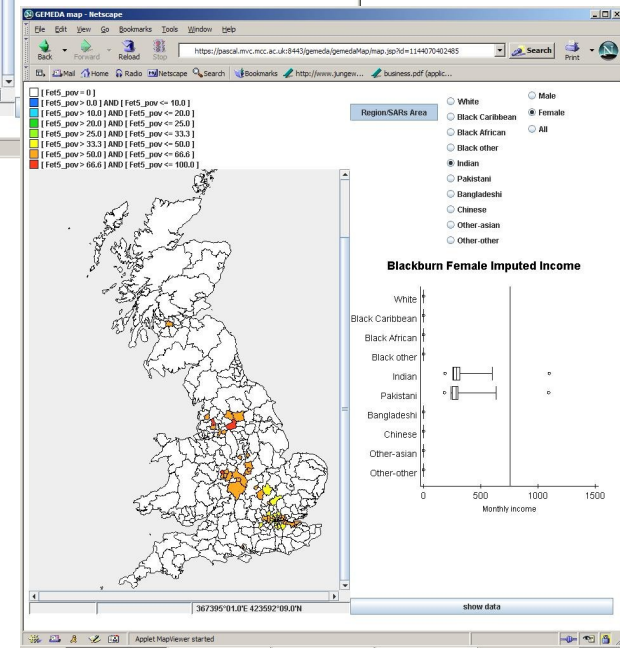
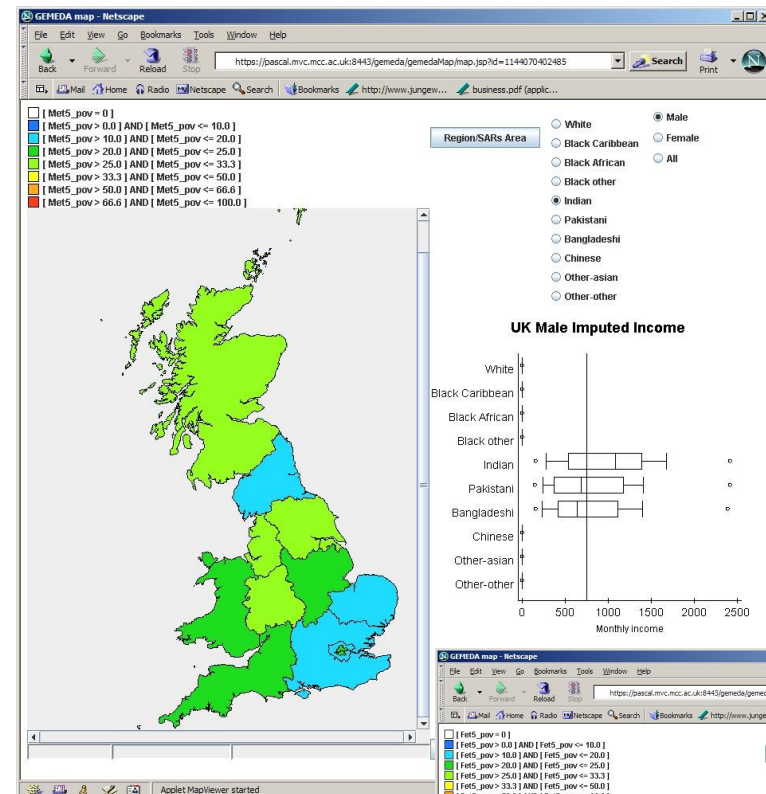


Data linkage and visualisation

- Grid-enabled micro econometric Data Analysis (GEMEDA) (Manchester)

- Data sources: British Household Panel Survey (BHPS) & UK Census' Samples of Anonymised Records (SARs)

- web-based service: access through browser light client



Data linkage and representation

- Geographic Virtual Urban Environments (GeoVUE) (UCL Centre for Advanced Spatial Analysis)
- visualise publicly available data using 2D, 3D and CAD



Animating pollution trails in Google Maps

The Google Map Creator - a freeware designed to make thematic mapping using Google Maps simpler.

Why e-Social Science?

- improved access
- better distributed collaboration
- linked data for richer results
- save time
- But, this talk is not to impose or preach to convert.
- parallel development at NCRM
- Mutual learning and community building